



**FOR LEASE**

**1,000 SF of Retail Space  
in Dillingham**

**1111 Dillingham Blvd  
Honolulu, HI 96817**



**Vanessa Kop (B)**  
RB-20654  
808-256-0370  
vkop@cbi-hawaii.com

**Maggie Chiu (S)**  
RS-86383  
808-387-7297  
mchiu@cbi-hawaii.com

**NAI CBI Hawaii**  
1712 S. King Street Suite 201  
Honolulu, HI 96826  
808.942.7100 | www.cbi-hawaii.com





# 1111 Dillingham Blvd.

## PROPERTY DESCRIPTION

- Retail Space
- Employee Restroom
- Located Across UH - Honolulu Community College
- Near Downtown, Honolulu / Chinatown
- Close proximity to Costco, Home Depot, Lowes and Best Buy
- Ample customer parking
- Visible store signage
- Ideal for sandwich, poke shop, deli, coffee bar, boba, smoothies, acai bowl, internet cafe, etc.

## INVESTMENT SUMMARY

Premium:	Negotiable
Space Size:	1,000 SF
Rent:	\$2.50 per SF - \$2,500.00
CAM:	\$0.73 per SF - \$730.00
	Water is included in CAM, but electricity is charged back monthly.
Ground Lease:	\$0.09 per SF - \$90.00

*Please call for more information.*



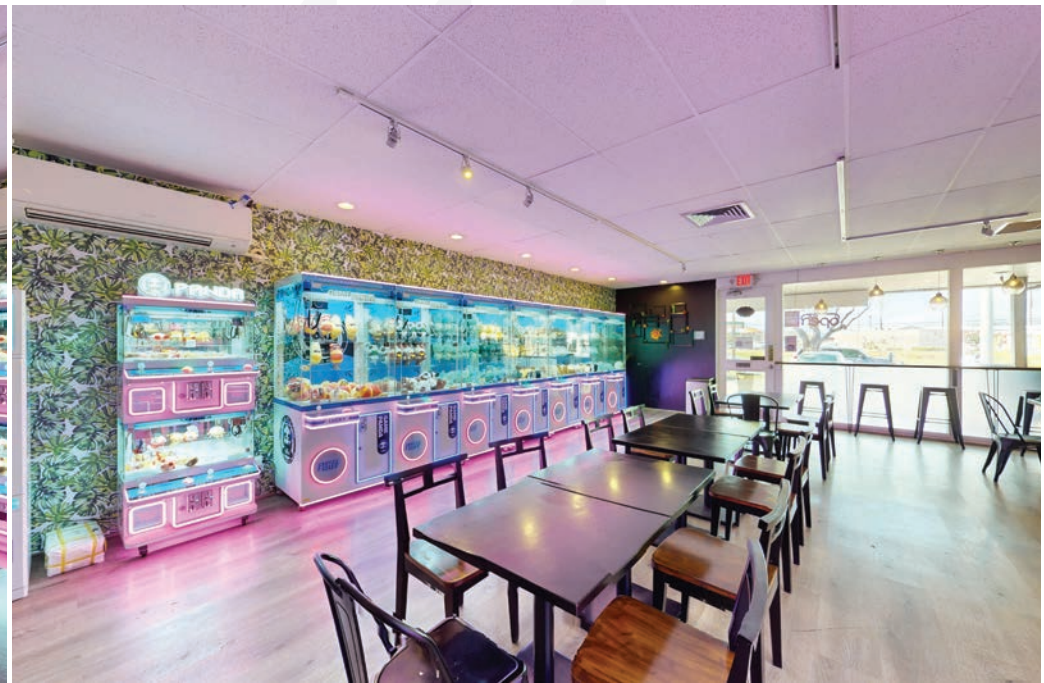
**Vanessa Kop (B)**  
 RB-20654  
 808-256-0370  
 vkop@cbi-hawaii.com

**Maggie Chiu (S)**  
 RS-86383  
 808-387-7297  
 mchiu@cbi-hawaii.com

**NAI CBI Hawaii**

1712 S. King Street Suite 201  
 Honolulu, HI 96826  
 808.942.7100 | www.cbi-hawaii.com





**Vanessa Kop (B)**  
 RB-20654  
 808-256-0370  
 vkop@cbi-hawaii.com

**Maggie Chiu (S)**  
 RS-86383  
 808-387-7297  
 mchiu@cbi-hawaii.com

**NAI CBI Hawaii**  
 1712 S. King Street Suite 201  
 Honolulu, HI 96826  
 808.942.7100 | www.cbi-hawaii.com





**Vanessa Kop (B)**  
RB-20654  
808-256-0370  
vkop@cbi-hawaii.com

**Maggie Chiu (S)**  
RS-86383  
808-387-7297  
mchiu@cbi-hawaii.com

**NAI CBI Hawaii**  
1712 S. King Street Suite 201  
Honolulu, HI 96826  
808.942.7100 | www.cbi-hawaii.com

