

FOR LEASE

**900 SF of Retail Space
with 5 Private Offices in
the Heart of Wakiki**

**2229 Kūhiō Ave.
Honolulu, HI 96815**



Yuuki Inagawa (S)
RS-79726
808-342-3039
yinagawa@cbi-hawaii.com

NAI CBI Hawaii

1712 S. King Street Suite 201
Honolulu, HI 96826
808.942.7100 | www.cbi-hawaii.com





2229 Kūhiō Ave.

PROPERTY DESCRIPTION

- Located in the heart of Waikiki
- Walking distance from Wakiki Beach and Hotels
- Close to International Marketplace
- Second above a convenient store
- Private Entrance
- 5 Private Offices, Storage Room, Bathroom
- Ideal for massage therapy clinic, spa and wellness center

INVESTMENT SUMMARY

Address:	2229 Kuhio Ave
Building Type:	Retail & Office
Space size:	Approx 900 sqft , 2nd floor unit
Rent:	Approx. \$4.06 per sqft ; \$3,650
CAM:	\$2.25 per SQFT
Zoning:	Waikiki Special District

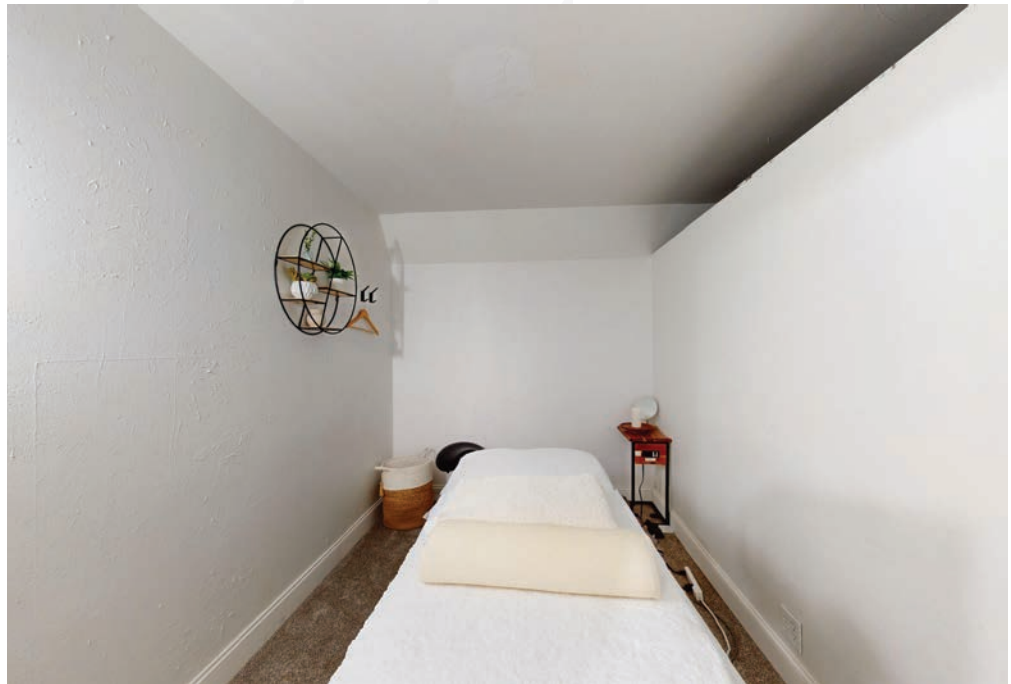


Scan to view
VIRTUAL TOUR

NAI
CBI Hawaii
Yuuki Inagawa (S)
RS-79726
808-342-3039
yinagawa@cbi-hawaii.com

NAI CBI Hawaii
1712 S. King Street Suite 201
Honolulu, HI 96826
808.942.7100 | www.cbi-hawaii.com

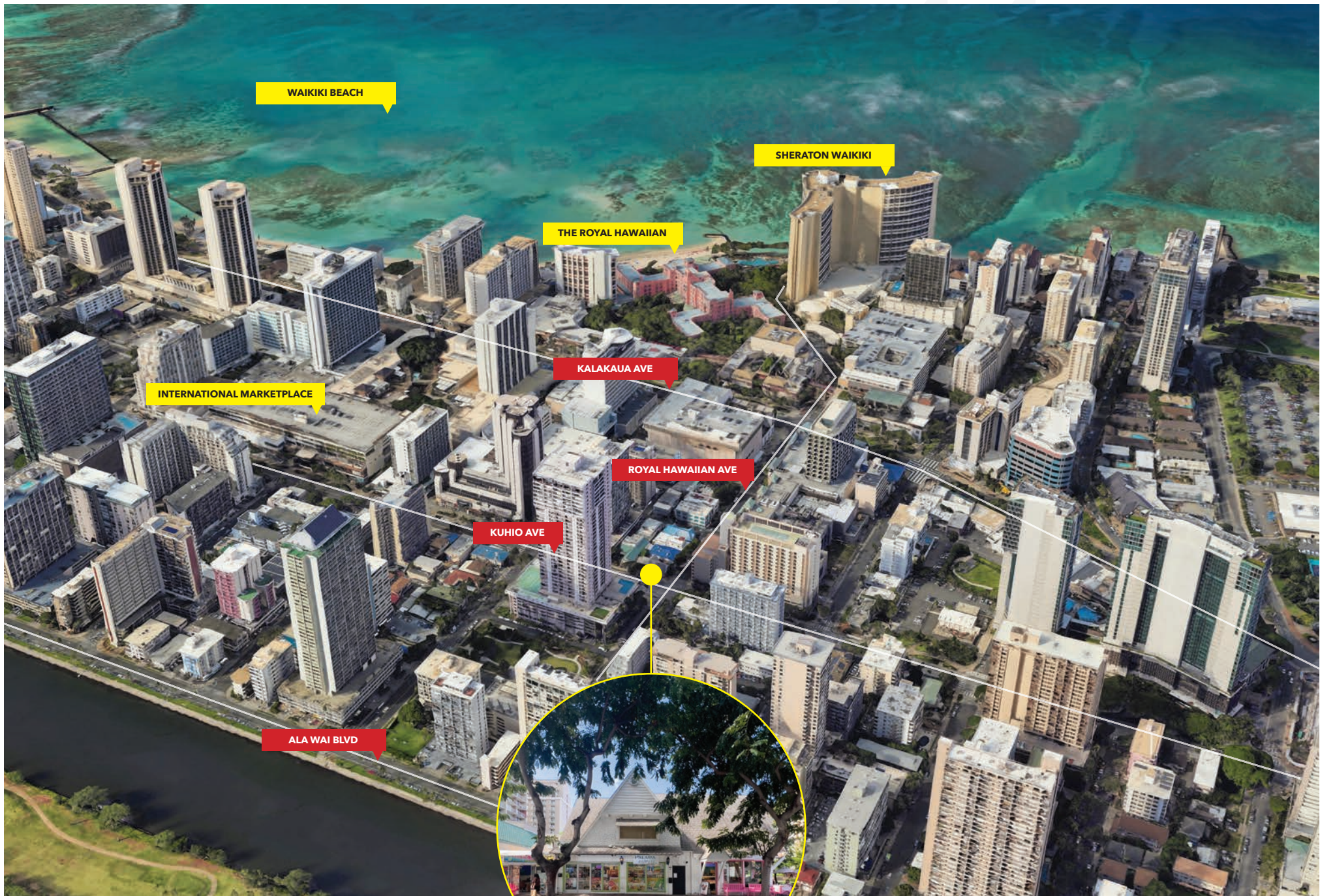




Yuuki Inagawa (S)
RS-79726
808-342-3039
yinagawa@cbi-hawaii.com

NAI CBI Hawaii
1712 S. King Street Suite 201
Honolulu, HI 96826
808.942.7100 | www.cbi-hawaii.com





Yuuki Inagawa (S)
RS-79726
808-342-3039
yinagawa@cbi-hawaii.com

NAI CBI Hawaii
1712 S. King Street Suite 201
Honolulu, HI 96826
808.942.7100 | www.cbi-hawaii.com

