



FOR LEASE

**2,670 - 5,813 SF OF
PRIME OFFICE SPACE AT
THE DOLE CANNERY**

**650 IWILEI RD
HONOLULU, HI 96817**



Taryn Taylor (S)
RS-85465
808-282-4583
ttaylor@cbi-hawaii.com

Brant K. Yasaka (S)
RS-68051
808-271-4697
byasaka@cbi-hawaii.com

NAI CBI Hawaii

1712 S. King Street Suite 201
Honolulu, HI 96826
808.942.7100 | www.cbi-hawaii.com





650 IWILEI ROAD

PROPERTY DESCRIPTION

- Affordable sublease Space Available From Current Tenant
- Space features multiple private offices, conference room, and two open areas for training or cubicles.
- Centralized location near the Iwilei Costco and Honolulu Central Business District.
- Common Restrooms On Same Floor
- Secure Access
- Possibility For Shared Kitchen Use Available
- Ample parking Available

INVESTMENT SUMMARY

TMK:	1-1-5-012-010-0000
Space:	Suite 415
Size:	2,670 SF - 5,813 SF
Area:	Central Business District Honolulu
Base Rent:	\$1.20 per SF/mo.
CAM:	\$1.54 per SF/mo.
Terms:	4 Years

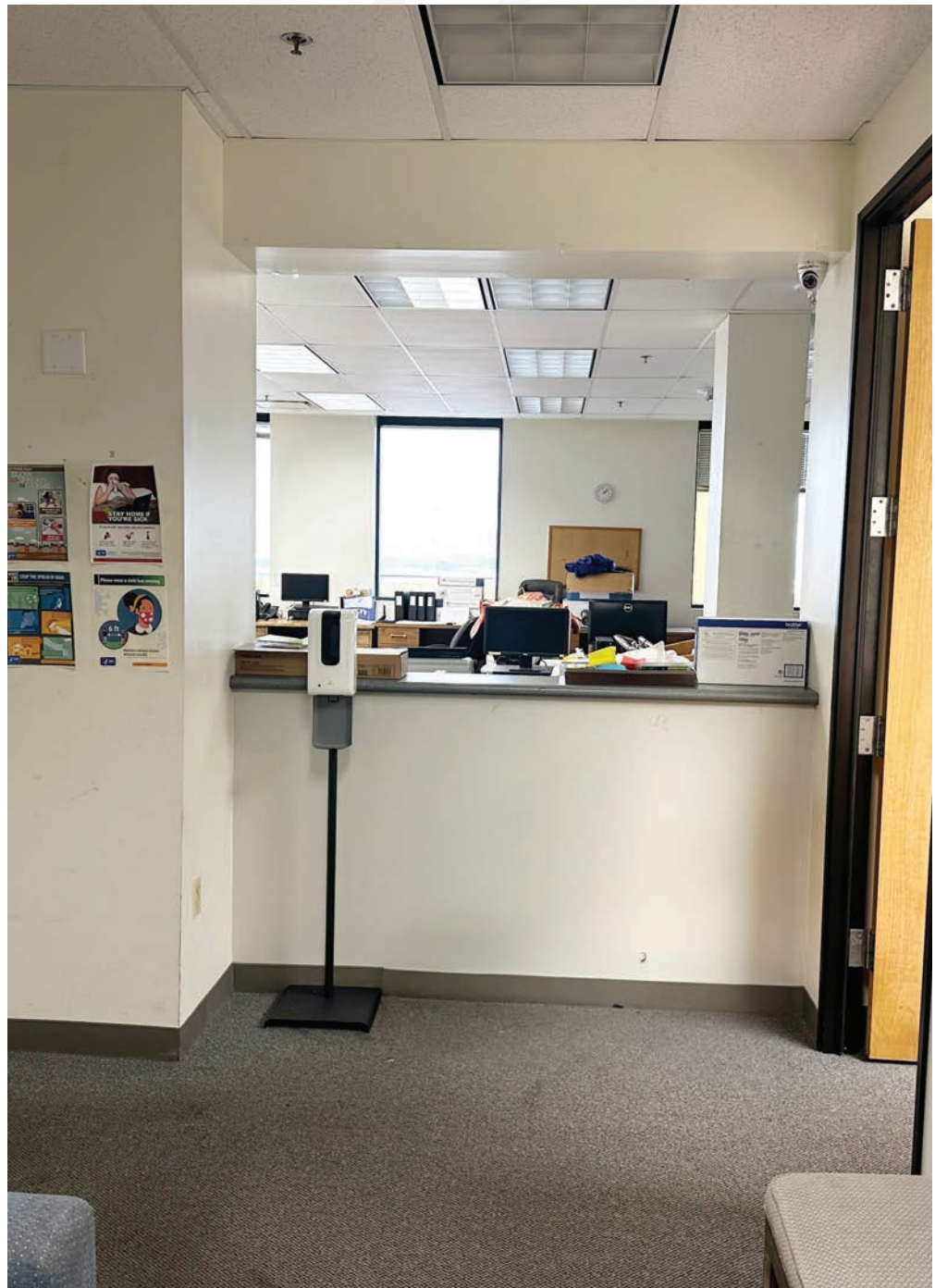


Taryn Taylor (S)
 RS-85465
 808-282-4583
 ttaylor@cbi-hawaii.com

Brant K. Yasaka (S)
 RS-68051
 808-271-4697
 byasaka@cbi-hawaii.com

NAI CBI Hawaii
 1712 S. King Street Suite 201
 Honolulu, HI 96826
 808.942.7100 | www.cbi-hawaii.com



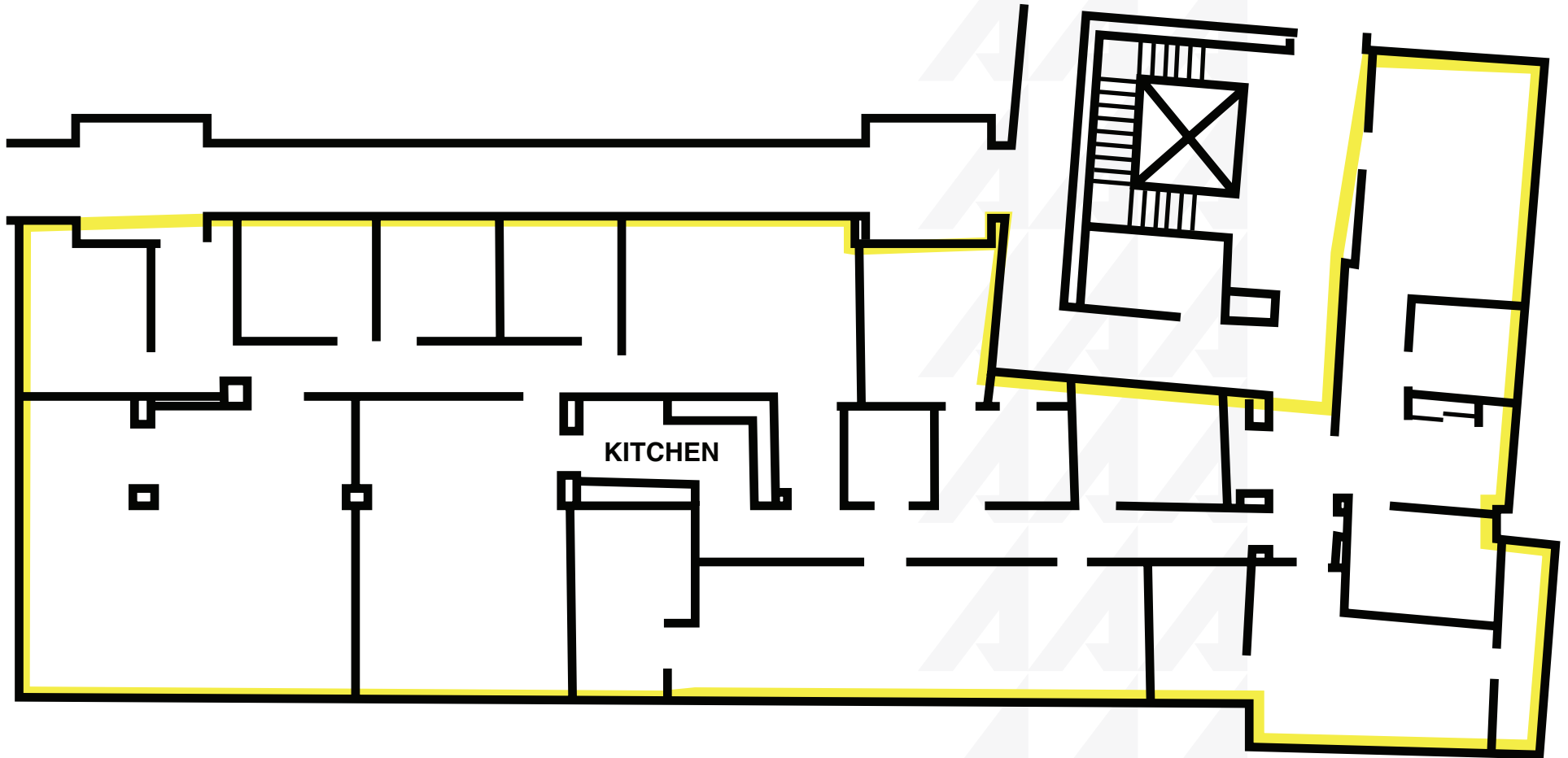


Taryn Taylor (S)
RS-85465
808-282-4583
ttaylor@cbi-hawaii.com

Brant K. Yasaka (S)
RS-68051
808-271-4697
byasaka@cbi-hawaii.com

NAI CBI Hawaii
1712 S. King Street Suite 201
Honolulu, HI 96826
808.942.7100 | www.cbi-hawaii.com





Taryn Taylor (S)
RS-85465
808-282-4583
ttaylor@cbi-hawaii.com

Brant K. Yasaka (S)
RS-68051
808-271-4697
byasaka@cbi-hawaii.com

NAI CBI Hawaii
1712 S. King Street Suite 201
Honolulu, HI 96826
808.942.7100 | www.cbi-hawaii.com





Taryn Taylor (S)
RS-85465
808-282-4583
ttaylor@cbi-hawaii.com

Brant K. Yasaka (S)
RS-68051
808-271-4697
byasaka@cbi-hawaii.com

NAI CBI Hawaii
1712 S. King Street Suite 201
Honolulu, HI 96826
808.942.7100 | www.cbi-hawaii.com

