



Asking Price **\$2,500,000**

**FOR  
SALE**



# NURSERY IN WAIMANALO

16-Acre landscape nursery for sale

## SPACE DETAILS

**Address:** 41711 Kaulukanu Pl.  
Waimanalo, HI 96795

**Space Size:** Total: 16.086 Acre  
Lot 32: 6.521 Acre  
Lot 34: 9.565 Acre

**Zoning:** AG-1

**TMK:** Lot 32: 1-4-1-27-28  
Lot 34: 1-4-1-27-11

## PROPERTY HIGHLIGHTS

- |  |  |
|--|--|
| <p><b>Lot 32</b></p> <ul style="list-style-type: none"> <li>• 2-bedroom, 1 bath main house (864 SF)</li> <li>• Various Utility Sheds</li> <li>• 2nd floor office over carport</li> </ul> <p><b>Features</b></p> <ul style="list-style-type: none"> <li>• Irrigation System</li> <li>• Gated</li> </ul> | <p><b>Lot 34</b></p> <ul style="list-style-type: none"> <li>• 4-bedroom, 1-bath main house (1,026 SF)</li> <li>• Various Utility Sheds</li> <li>• 4 Greenhouses</li> </ul> <ul style="list-style-type: none"> <li>• Sheds and carports for vehicles and equipment</li> </ul> |
|--|--|



**Daniel Jarrett III (S)**  
RS-63586  
808-256-3506  
dj@cbi-hawaii.com

The information contained herein has been obtained from sources reliable but has not been verified and no guarantee, Warranty or representation, either express or implied, is made with respect to such information. Terms or sale or lease and availability are subject to change or withdrawal without notice.



## THE NURSERY

Introducing the stunning 16-acre tree nursery located in the beautiful Waiamanalo, Hawaii! This nursery is the perfect opportunity for anyone in the commercial landscaping or construction industry looking to expand their operations.

The property boasts a wide variety of trees, including tropical hardwoods, palms and ornamental trees. The fertile land is ideal for growing and cultivating large trees suitable for commercial use such as landscaping, construction projects, and more. The property also includes 2 homes, greenhouses, and ample space for expansion.

Don't miss out on this opportunity to own a thriving commercial tree nursery in one of the most beautiful locations in the world. Contact us today to take the first step towards owning your own piece of paradise.

## THE PROPERTY

The property is situated in the heart of Waiamanalo, a picturesque community known for its natural beauty and close proximity to Honolulu and other commercial centers. With easy access to major roads and highways, this nursery is perfectly located for commercial operations.



**Daniel Jarrett III (S)**  
RS-63586  
808-256-3506  
dj@cbi-hawaii.com

The information contained herein has been obtained from sources reliable but has not been verified and no guarantee, Warranty or representation, either express or implied, is made with respect to such information. Terms or sale or lease and availability are subject to change or withdrawal without notice.



41-711 Kaulukanu Place | Lot 32: 6.521 Acres



**Daniel Jarrett III (S)**  
RS-63586  
808-256-3506  
dj@cbi-hawaii.com

The information contained herein has been obtained from sources reliable but has not been verified and no guarantee, Warranty or representation, either express or implied, is made with respect to such information. Terms or sale or lease and availability are subject to change or withdrawal without notice.



41-858 Kaulukānu Street | Lot 34: 9.565 Acres



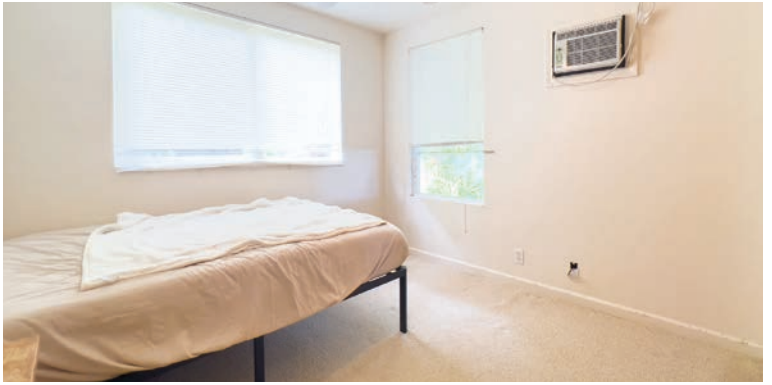
**Daniel Jarrett III (S)**

RS-63586

808-256-3506

dj@cbi-hawaii.com

The information contained herein has been obtained from sources reliable but has not been verified and no guarantee, Warranty or representation, either express or implied, is made with respect to such information. Terms of sale or lease and availability are subject to change or withdrawal without notice.



**Daniel Jarrett III (S)**  
RS-63586  
808-256-3506  
dj@cbi-hawaii.com

The information contained herein has been obtained from sources reliable but has not been verified and no guarantee, Warranty or representation, either express or implied, is made with respect to such information. Terms or sale or lease and availability are subject to change or withdrawal without notice.



**Daniel Jarrett III (S)**  
RS-63586  
808-256-3506  
dj@cbi-hawaii.com

The information contained herein has been obtained from sources reliable but has not been verified and no guarantee, Warranty or representation, either express or implied, is made with respect to such information. Terms or sale or lease and availability are subject to change or withdrawal without notice.

# EQUIPMENT LIST

Item	Year
LT213 Trencher	2005
Bandit II Chipper	1992
Stow Cement Mixer	1989
Ford 555C Backhoe	1989
B-300 bobcat	2005
LT 313 Trencher	2005
Bobcat 5185	2005
Cat 236	2007
Bobcat Scarifier	
Cat 76B Trencher	2007
Contra FBTL (581-WEB)	2005
Ford FTDB (865-TSW)	2008
Chevy PU (477-TSJ)	2006
Mohawk MSTL (742-WDJ)	
Chevy MSTR (Boom) (612-TJX)	1984
Shop-made Trailor (091-WDP)	
226 Cat	
6 Golf Carts	



**Daniel Jarrett III (S)**  
 RS-63586  
 808-256-3506  
 dj@cbi-hawaii.com

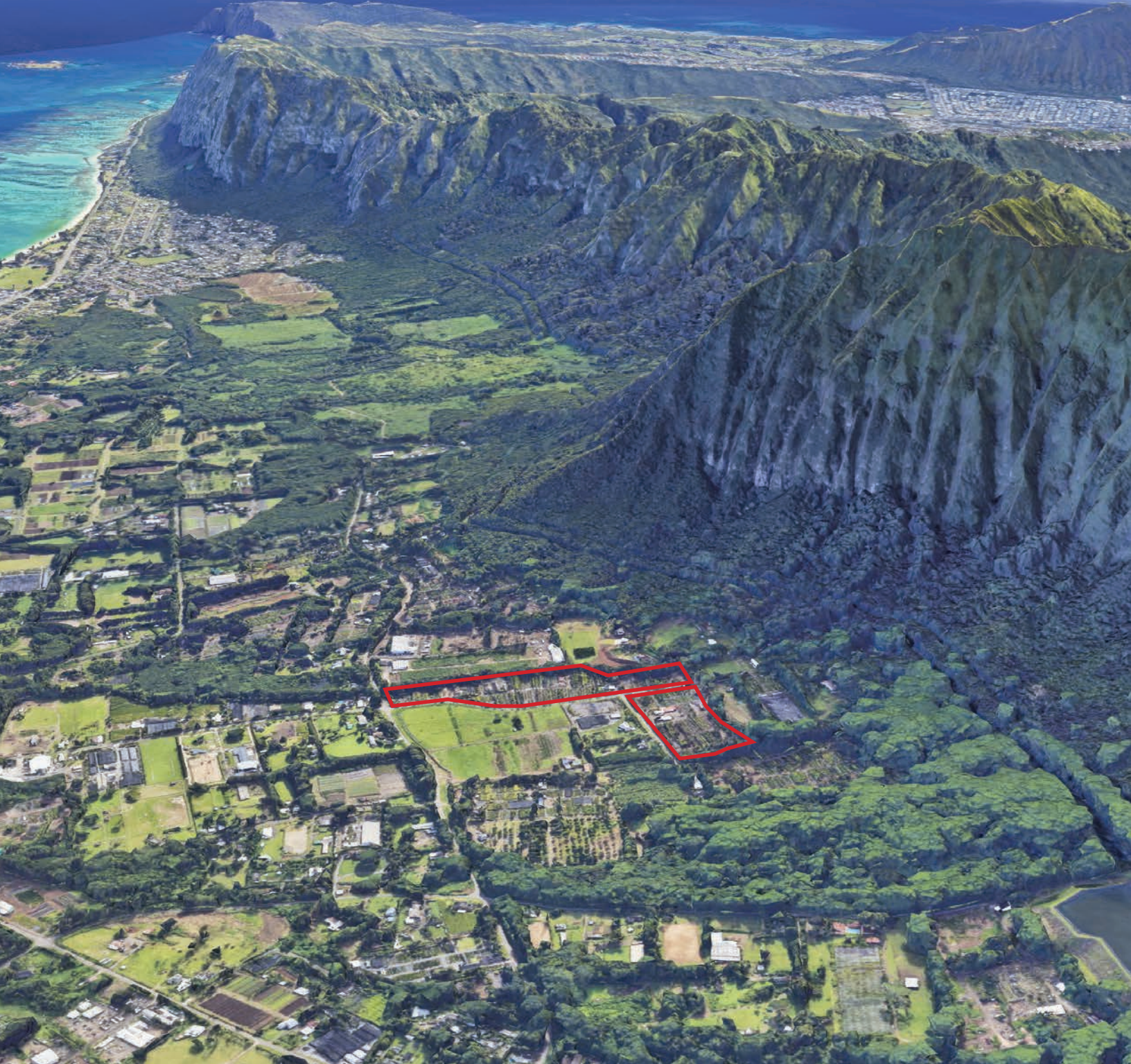
The information contained herein has been obtained from sources reliable but has not been verified and no guarantee, Warranty or representation, either express or implied, is made with respect to such information. Terms or sale or lease and availability are subject to change or withdrawal without notice.

**FOR  
SALE**



# NURSERY IN WAIMANALO

16-Acre landscape nursery for sale



**Daniel Jarrett III (S)**

RS-63586

808-256-3506

[dj@cbi-hawaii.com](mailto:dj@cbi-hawaii.com)

The information contained herein has been obtained from sources reliable but has not been verified and no guarantee, Warranty or representation, either express or implied, is made with respect to such information. Terms of sale or lease and availability are subject to change or withdrawal without notice.